

Customer :

customer

Customer part :

customer part

Comment :

Comment

S1=0.23

S2=0.89

Tmax=438

Tp S2=477.0

PI=0.2

HI=168

Sample =10299.3

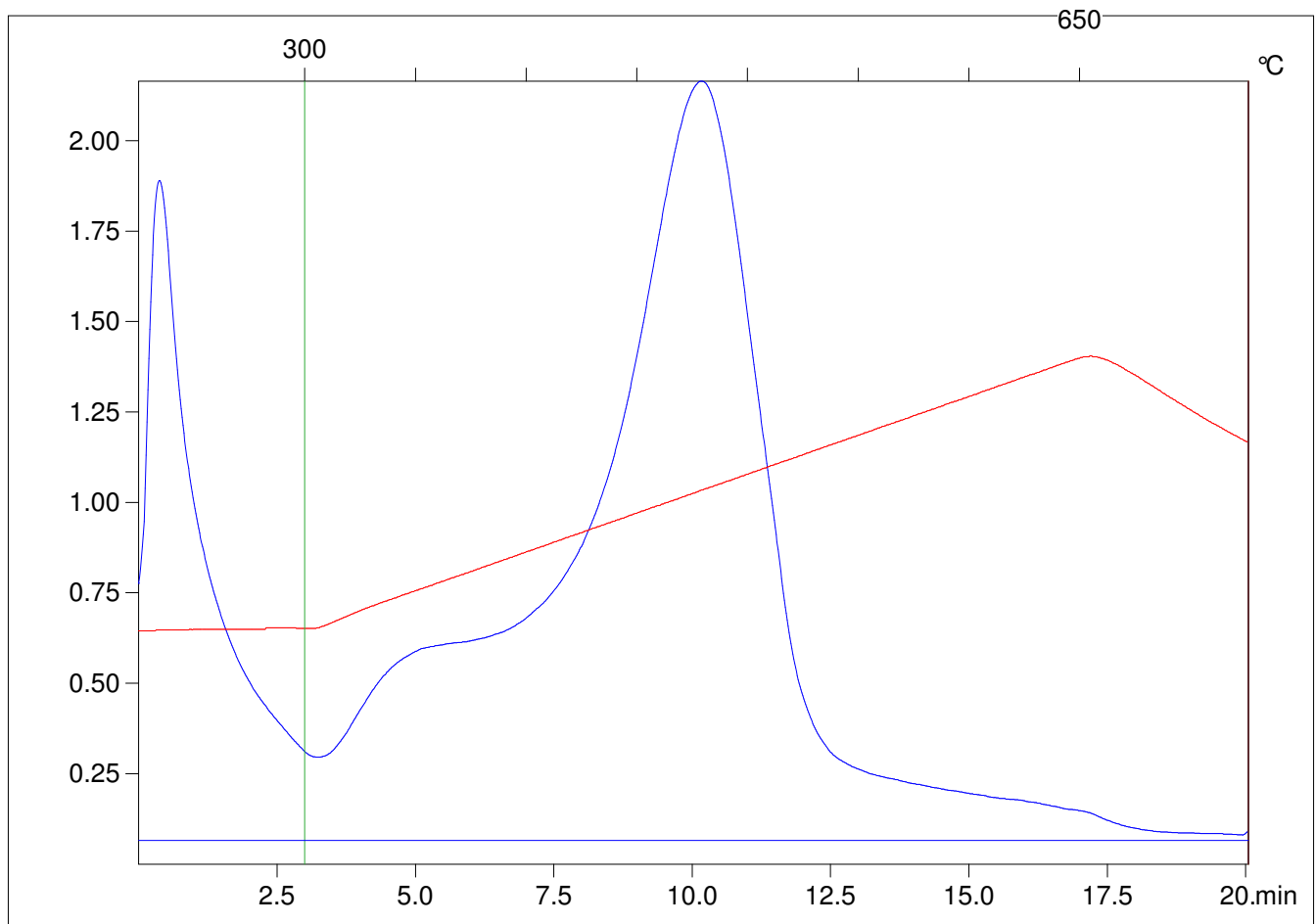
Method =Bulk Rock

Cycle=Basic

KFID(10\*9)=1167

Qty =70.6

TOC=0.53



C:\VINC\PK141015\PK081.R00 : FID pyrolysis graphic

State

Pyro Status

Oxi Status